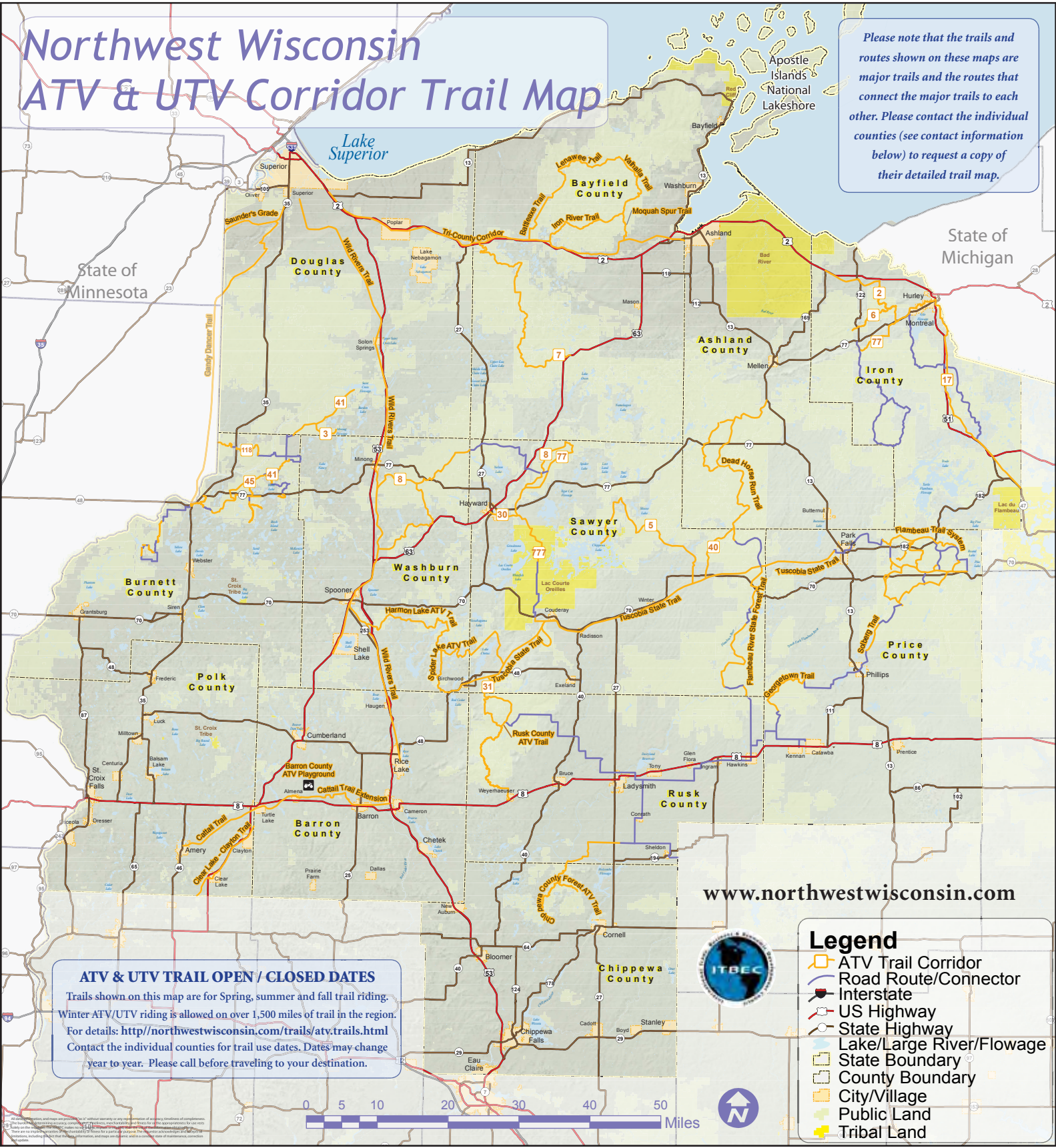


Northwest Wisconsin ATV & UTV Corridor Trail Map

Please note that the trails and routes shown on these maps are major trails and the routes that connect the major trails to each other. Please contact the individual counties (see contact information below) to request a copy of their detailed trail map.

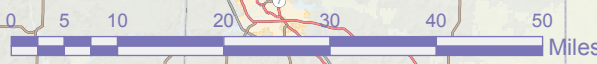


ATV & UTV TRAIL OPEN / CLOSED DATES
 Trails shown on this map are for Spring, summer and fall trail riding. Winter ATV/UTV riding is allowed on over 1,500 miles of trail in the region. For details: <http://northwestwisconsin.com/trails/atv.trails.html> Contact the individual counties for trail use dates. Dates may change year to year. Please call before traveling to your destination.

www.northwestwisconsin.com

Legend

- ATV Trail Corridor
- Road Route/Connector
- Interstate
- US Highway
- State Highway
- Lake/Large River/Flowage
- State Boundary
- County Boundary
- City/Village
- Public Land
- Tribal Land



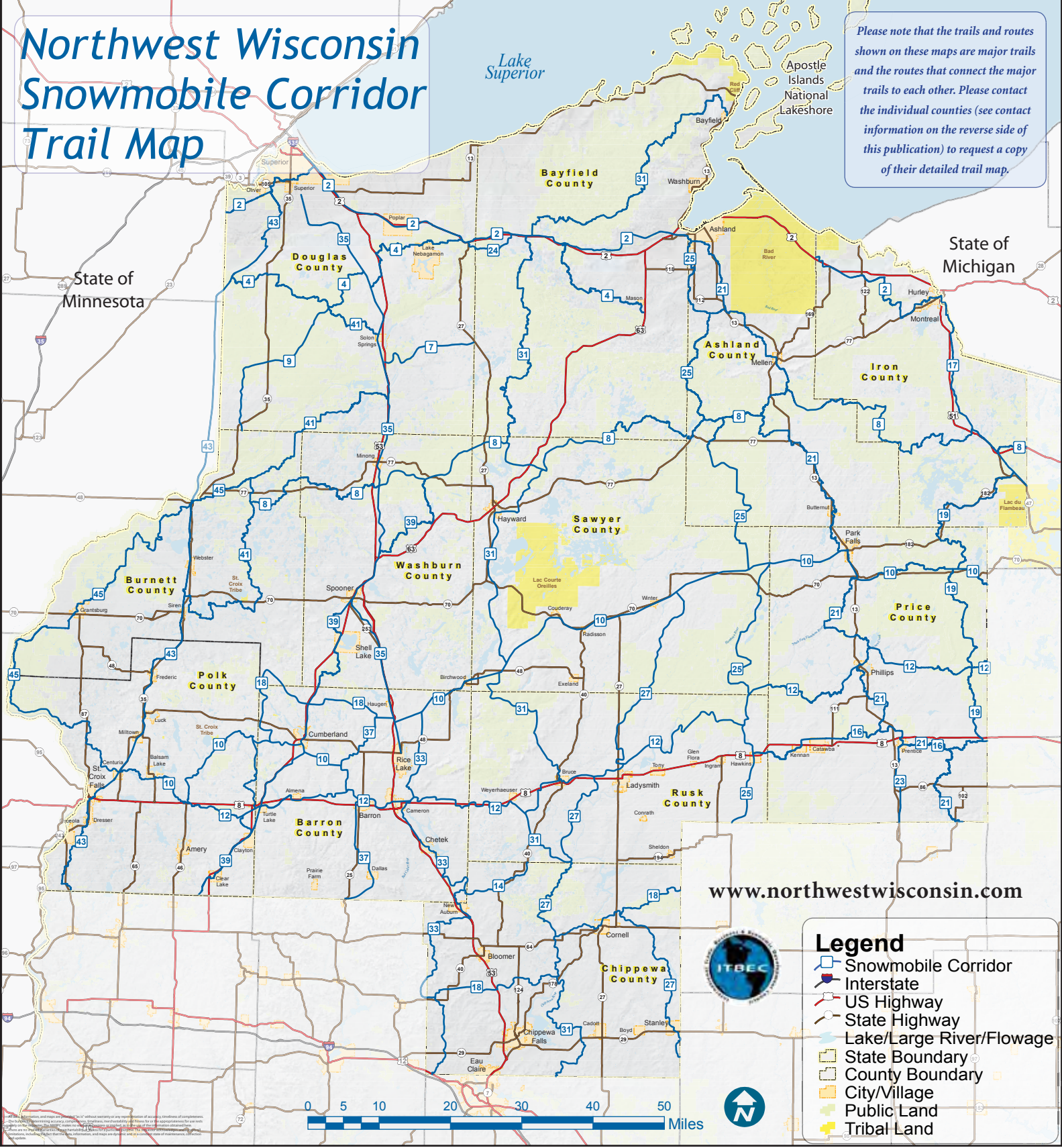
Trail Map
 NORTHWEST WISCONSIN
 CORRIDOR
 & Snowmobile
 SECOND EDITION
 Author: Counties: Ashland • Iron • Barron • Polk • Sawyer • Washburn • Burnett • Polk • Price • Rusk • Chippewa • Sawyer • Douglas • Washburn

715-416-3256
www.northwestwisconsin.com

- County Visitor INFORMATION**
 To obtain detailed trail maps, trail condition reports and general visitor information contact each county:
- Ashland County
800-284-9484
www.travelashlandcounty.com
 - Barron County
800-529-4148
www.barroncounty.com
 - Bayfield County
715-375-6125
www.travelbayfieldcounty.com
 - Burnett County
800-788-3164
www.burnettcounty.com
 - Chippewa County
866-723-0331
www.chippewacounty.com
 - Douglas County
800-942-5313
www.visitdouglascounty.com
 - Iron County
715-561-2922
www.ironcountywi.com
 - Polk County
800-222-7655
www.polkcountywisconsin.com
 - Price County
800-269-4505
www.pricecountywi.net
 - Rusk County
800-535-RUSK
www.ruskcountywi.com
 - Sawyer County
800-724-2992
www.haywardlakes.com
 - Washburn County
800-367-5306
www.visitbarroncounty.com

Northwest Wisconsin Snowmobile Corridor Trail Map

Please note that the trails and routes shown on these maps are major trails and the routes that connect the major trails to each other. Please contact the individual counties (see contact information on the reverse side of this publication) to request a copy of their detailed trail map.



Legend

- Snowmobile Corridor
- Interstate
- US Highway
- State Highway
- Lake/Large River/Flowage
- State Boundary
- County Boundary
- City/Village
- Public Land
- Tribal Land

ITBEC

With over 1,000 miles of ATV trails maintained by local ATV clubs, Northwest Wisconsin boasts some of the most enjoyable riding in the Midwest. Along the trail system riders will find easy access to businesses ready to cater to their lodging, food & beverage, fuel and other needs.

Many of the counties allow UTVs and off-road motorcycles on some trails during certain times of the year. Visit www.northwestwisconsin.com to find more information on all of the incredible trail systems in Northwest Wisconsin, links to maps, trail conditions, equipment rental information, lodging & dining and more or to request additional copies of this Northwest Wisconsin ATV/UTV & Snowmobile Corridor Trail Map.



With over 4,500 miles of snowmobile trails maintained by local snowmobile clubs, Northwest Wisconsin is home to some of the best riding in the Midwest. Well maintained trails wind their way through rolling hills and scenic forests, passing by lakes, rivers and ponds. Along the trail system riders will find friendly business owners ready to cater to their lodging, food & beverage, fuel and other needs.

For help planning your snowmobile trip to Northwest Wisconsin, visit www.northwestwisconsin.com where you will find links to up-to-date trail reports, maps, lodging, dining, rental information, and more or to request additional copies of this Northwest Wisconsin ATV/UTV & Snowmobile Corridor Trail Map.

